

R340L **SMART**

OPERATING WEIGHT: 33800 kgs

GROSS POWER : 276 HP @ 1900 rpm

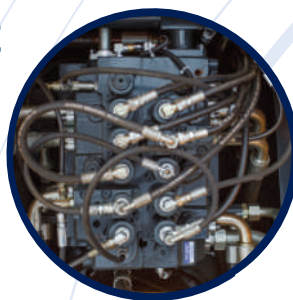
BUCKET CAPACITY: 1.44 - 2.1m³



R340L SMART

BEST-IN CLASS PERFORMANCE

- Advanced CAPO system
- Hydraulic flow summation
- Regeneration system
- Excellent digging forces



OPERATOR COMFORT

- Spacious cabin
- Fully adjustable seat
- Enhanced visibility
- User friendly functionality



IMPROVED FUEL EFFICIENCY

- Fuel saving kit
- Electro hydraulic system
- Deceleration system
- Efficient breaker mode



DESIGNED FOR SMART WORK



INCREASED MACHINE DURABILITY

- Strengthened undercarriage
- Proven upper structure
- Durable parts
- Heavy duty front attachment



SIMPLIFIED MAINTENANCE

- Easy serviceability
- Extended maintenance
- Large capacity fluid tank
- Low life cycle cost



PARTS & SUPPORT

- Hyundai genuine parts
- Max parts availability
- On-site product support
- Remote management system (Hi-Track)



> PERFORMANCE

PRIDE AT WORK

Hyundai construction equipment strives to build state-of-the-art earthmoving equipment to give every operator maximum performance, more precision, versatile machine preferences, and proven quality.

New technologies designed to improve performance and precision, make the Hyundai excavator smooth, fast and easy to control.

Take pride in your work with Hyundai!



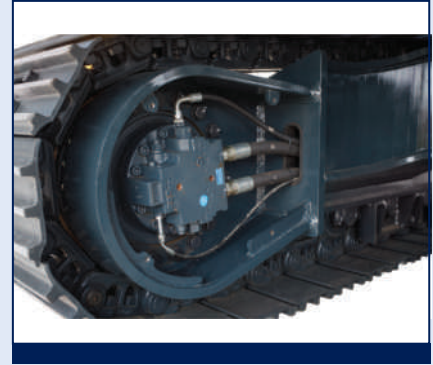
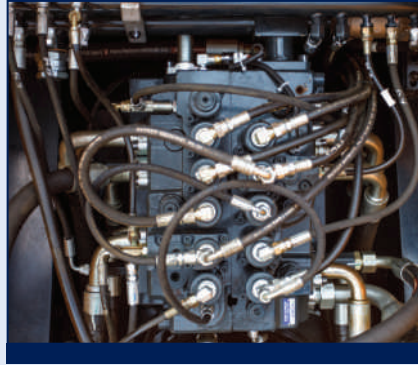
ENGINE

The water cooled, 4 cycle diesel, 6 cylinder in line, direct injection turbocharged, charge air cooled engine is built for power, reliability, efficiency and reduced emissions.

The engine is manufactured to perform in wide range of heat, humidity and dust conditions without compromising productivity.



R340LC SMART



HYDRAULIC SYSTEM

Electro hydraulic control system provides wide range of flow at various workloads for paramount productivity. Open center design of Main Control Valve (MCV) ensures fast response and maximum efficiency in tough conditions.

CHOICE OF OPERATING MODE

Working Mode	Advantage
Power mode	<ul style="list-style-type: none"> • H Mode - Max speed & Power for mass production • S Mode - Fixed RPM for optimum performance & fuel economy
Work Mode	<ul style="list-style-type: none"> • Heavy Duty Work Mode modifies power to meet higher productivity level • General Work Mode is selected automatically for conventional loading operation • Breaker Operation Mode sets the pump flow to the optimal level and boosts efficiency
User Mode	<ul style="list-style-type: none"> • M mode: Maximum power mode is selected to meet extreme duty operation • U mode: Used to Memorize Operator's Preferable Power Setting



POWER BOOST SYSTEM

Increased digging forces by 10% then normal system pressure for short duration.

- **Bucket** - 23000 (25050) kgf
- **Arm** - 16600 (18080) kgf

RELIABLE FILTRATION SYSTEM

Removes water and contaminants in the fuel to ensure clean fuel flow.

EFFICIENT COMBINED OPERATION

Inbuild flow summation system and Swing priority function leads to faster swing cycle results in excellent output

MAX DRAWBAR PULL

Excellent maneuverability, slope climbing performance and ability to change direction smoothly.

- **Tractive Force** : 28500 kgf

SWING PRIORITY

Swing priority spool is auto piloted which boosts higher hydraulic energy to swing circuitry. This leads to faster swing cycle which in turn results in more output & better performance.



FUEL EFFICIENCY



IMPROVED FUEL EFFICIENCY

Advanced CAPO system, newly designed CMCU, power & working mode options results in excellent fuel efficiency.

FUEL SAVING KIT

- Monitor undue load and cut down losses.
- Provides better fuel efficiency



ARM REGENERATION SYSTEM

- Smooth operation
- Prevent cavitation
- Increased performance & fuel efficiency

NEGATIVE FLOW CONTROL

Optimum balance between pump and engine output for better fuel efficiency



ONE TOUCH IDLE

Prevents fuel losses by reducing engine rpm during no-load condition

AUTO DECELERATION SYSTEM

Moderates engine RPM to idle state when machine remains idle for 4 seconds to reduce fuel consumption and operation cost

EXCLUSIVE BREAKER MODE

Excellent fuel saving due to exclusive power for breaker operation



OPERATOR COMFORT

OPERATOR DELIGHT

More space, better visibility, powerful air-conditioning and adjustable fully suspension seat, easy to access controls ensure that the operator can work for longer hours without stress or fatigue in the comfortable and safe working environment.



SPACIOUS CABIN

More head room, large space, large door for easy entry and exit

OPERATOR SEAT

Easily adjustable fully suspension seat with adjustable arm rest



360 degree visibility, fully open sunroof, added side lamp & mirror ensure comfortable, safe working environment.

INSTRUMENT PANEL

The user-friendly cluster making it easy to check all critical systems like

- Hydraulic oil temperature,
- Coolant temperature
- Fuel level
- 12 warning indicators.
- Self diagnostic checks
- Maintenance management

to optimizing productivity needs ensuring fuel efficiency



AIR CONDITIONER

- High performance air conditioner
- Improved AC ducting
- Water bottle cooling system

SMOOTH LEVER CONTROLS

Ergonomically placed lever controls reduces fatigue over long working hours.

RELIABILITY

RUGGED UNDERCARRIAGE

X frame provides excellent resistance to torsional bending to enhance structure life



GP BUCKET

- Features high tensile strength steel with internal reinforcements
- Specially designed for light duty to moderate application
- Excellent for earthwork cutting & loading operation



ROCK BUCKET

- Wear resistant special alloy steel added to blade & side attack plates
- Heavy duty reinforcement added to inner & outer body
- Excellent for stone Quarry or application featuring high abrasion & impact.



MARBLE BUCKET

- Wear resistant special alloy steel added to blade & side attack plates
- Additional thicker reinforcement plates & lateral plate on cutting edge section
- Special profile to handle Marble & Granite boulders



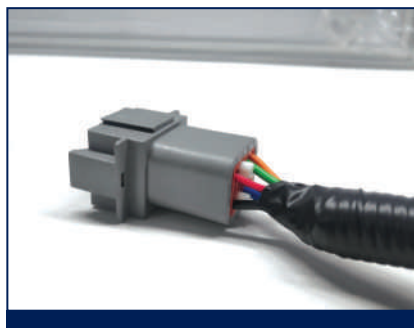
HEAVY DUTY FRONT STRUCTURE

Use of specialized advance steel plates and reinforced design for higher strength and durability



AIR PRE-CLEANER

- Removes dirt and Debris from air before entering air filter
- Improves air filter life
- Low maintenance cost



RELIABLE ELECTRICALS

- Dust and water proof connectors
- Longer component life



BALANCED SWING SYSTEM

Swing gear uses a ball bearing to absorb radial and thrust load

The reinforced upper structure and lower frame are build to withstand tougher working conditions and contribute towards a well-balanced & solid machine while operating in adverse terrains.

Reinforced front attachment supports excellent bucket digging and arm crowd force.

SERVICEABILITY

LEADING SERVICE INTERVAL

More efficient cooling system which extend service intervals , minimize operating cost and reduce machine down time.

CHANGE INTERVAL

Hydraulic oil	5000 hrs
Hydraulic filter	1000 hrs
Engine oil	250 hrs
Engine Filter	250 hrs



IMPROVED COOLING EFFICIENCY

- Radiator and oil cooler are arranged in line to maximize efficiency
- Easily accessible from ground level to clean



LARGE LCD MONITOR

Operator can check the machine's vital signs without any difficulties

- **Maintenance Management**
Proactive maintenance
- **Self Diagnostic**
Reduces down time
- **Warning Indicator**
Ensures safe working

DURABLE MOUNTING PIN BUSH



EASY ACCESSIBILITY

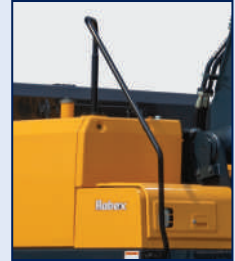
Easy access for maintenance means regular checks get done faster. Hyundai's SMART machines feature easy service access to increase uptime and reduce operating costs.



> SAFETY

SAFETY - MORE THAN A PEACE OF MIND. TOTAL CONFIDENCE.

Cabin is integrally welded with low-stress using high strength steel to provide enhanced protection. Handrails and steps are provided for easy operation. anti-slip pads provide safety against skidding while climbing machine



COUNTER BALANCE VALVE

Works as a hydrostatic brake and prevents machine against accidental roll down in steep gradients.



BOOM & ARM HOLDING SYSTEM

Prevent attachments from drifting against gravity due to prolonged overhanging.

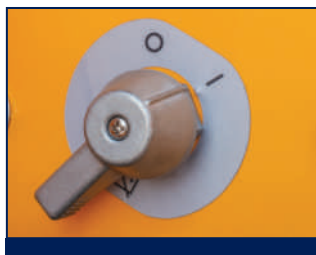


ANTI RESTART FUNCTION

Prevents starter from damage during engine operation



AUTO ENGINE OVERHEAT & WARM UP FUNCTION



BATTERY DISCONNECT SWITCH



LOWER BELLY GUARD



TANK SAFETY COVER

PARTS & SUPPORT

HYUNDAI GENUINE PARTS

Developed in synergy with our machines, Hyundai parts and lubricants ensure that you get the high levels of performance, reliability and safety that come with the complete Hyundai experience.

Enjoy the confidence and assurance of the most stringent testing procedures and the high quality manufacturing processes safeguarding your machine's health. Experience the versatility of our 200+ strong outlet network across India

WHY RISK IT?

Maximize profits and extend your machine's life.

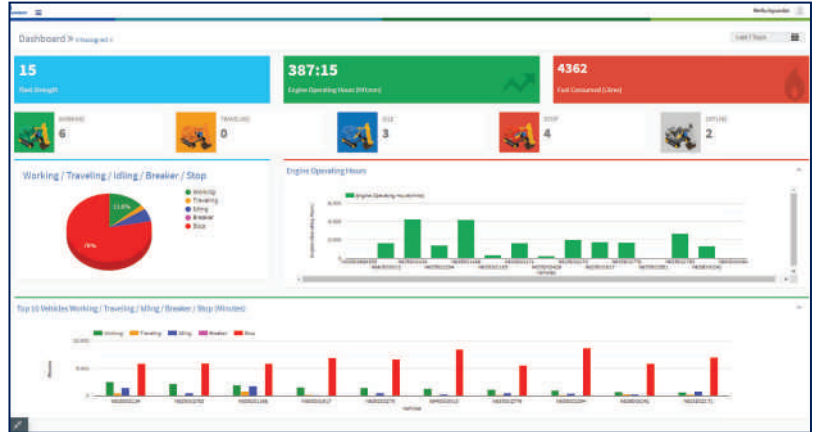
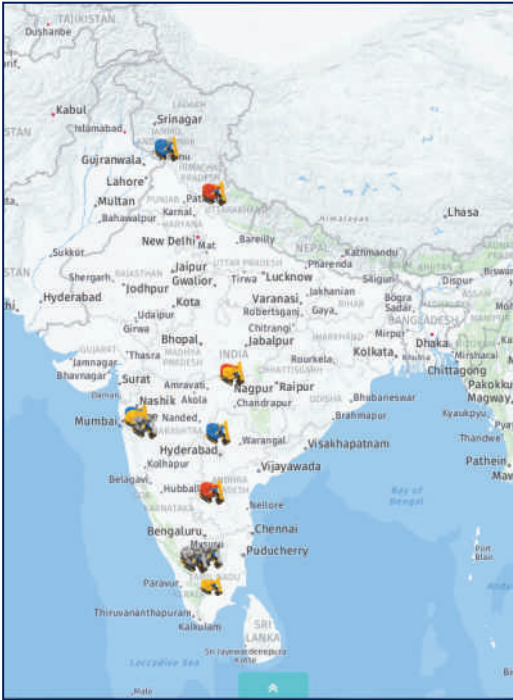


BENEFITS OF USING GENUINE HYUNDAI PARTS AND LUBRICANTS

- Genuine Hyundai Parts meet strict specifications and standards in Chemistry, Microstructure and Tensile Strength.
- Benefit from the continuous improvements and advancements made by Hyundai's technical team
- Improved performance of hydraulics and engine components
- Enjoy greater productivity with higher uptime
- Higher resale values
- Reduced oil consumption and unexpected breakdowns
- Enhanced component life



Our unique remote management system allows customers to access machine operating information & obtain service & maintenance alerts at the touch of a button

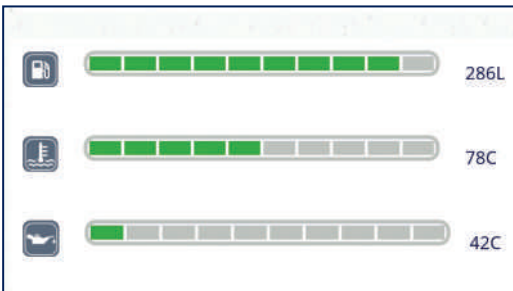


INCREASED PRODUCTIVITY

Remote management system empowers you to enhance the efficiency of your operations. Make better decision by comparing the machine's operating time with its travelling idling & breaker use duration.

CONVENIENT & EASY MONITORING

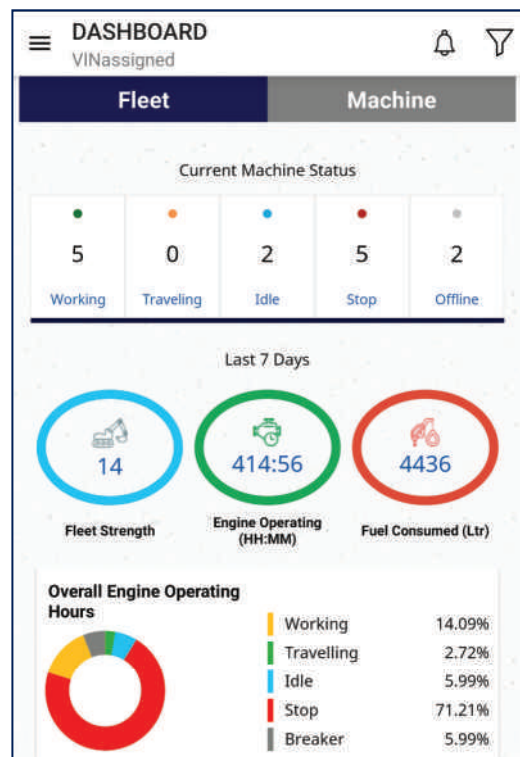
Enjoy round the clock and on the move access to your machine information through the website or mobile app.



PROACTIVE MAINTENANCE

Access your machines service & maintenance history with the utmost convenience. Plan your service schedules intelligently with our regular reminders.

SELECT REPORTS	
Geo Zone In/Out Detail	<input checked="" type="radio"/>
Fault Code	<input type="radio"/>
Vehicle Usage Summary	<input type="radio"/>
Temperature Record	<input type="radio"/>



ALARMS

Get notified of system alarms & protect your machine from critical faults & experience repairs.

SECURITY & FLEET MONITORING

Protect your machine from theft or unauthorized use. GPS features allows you to create a geo-fence & alerts you if the machine moves out of the defined boundary.

SPECIFICATIONS

Engine

Maker/Model		HYUNDAI D6AC-C1	
Rated flywheel horse power	SAE	J1995 (Gross) J1349 (Net)	276HP (206KW) @1900rpm 271HP (202KW) @1900rpm
Max Torque		120.0Kgfm(868 lbf.ft)@1400rpm	

Hydraulic System

Main pump	
Type	Two variable displacement piston pumps
Max. flow	2x282 lpm
Sub-pump for pilot circuit	Gear pump
Cross-sensing & fuel saving pump system	

Hydraulic Motors

Travel	Two speed axial piston motor with counter balance valve and parking brake
Swing	Axial piston motor with automatic brake

Relief Valve Settings

Implement circuits	330kgf/cm ²
Travel	330kgf/cm ²
Power Boost	360kgf/cm ²
Swing Circuit	265kgf/cm ²
Pilot Circuit	35kgf/cm ²
Service valve	Installed

Coolant & Lubricant Capacity

REFILLING	LITRE
Fuel tank	570
Engine coolant	45
Engine oil	27.3
Swing device-gear oil	11
Final drive (each)	5.5
Hydraulic system / Hydraulic tank	380/210

Drives & Brakes

Drive method	Fully hydrostatic type
Drive motor	Axial piston motor in-shoe design
Reduction system	Planetary reduction gear
Max. drawbar pull	28,500kgf(62830 lbf)
Max. travel speed (high/low)	5.4 kmph/3.2kmph
Gradeability	35 Degree (70%)
Parking brake	Multi wet disc

Undercarriage

The X-leg type center frame is integrally welded with reinforced box-section track frames. The undercarriage includes lubricated rollers, idlers, track adjusters with shock absorbing spring and sprockets and track chain with triple grouser shoes.

Centre frame	X-leg type
Track frame	Pentagonal box type
No. of shoes on each side	48
No. of carrier rollers each side	2
No. of track guard each side	9
No. of rail guard each side	3

Swing System

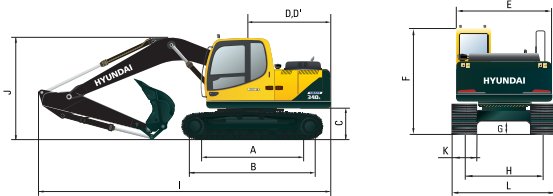
Swing motor	Axial piston motor
Swing reduction	Planetary gear reduction
Swing bearing lubrication	Grease bathed
Swing brake	Multi wet disc
Swing speed	9.5 rpm

Operating Weight

Shoe Width mm (in)	Operating weight kg (lb)	Ground pressure kgf/cm ² (psi)
600 mm (24")	33,800 (74,516)	0.65 (9.24)

Dimensions

(mm)



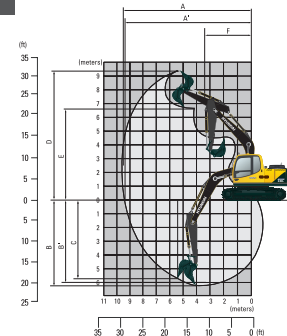
A	Tumbler distance	4030	
B	Overall length of crawler	4940	
C	Ground clearance of counter weight	1200	
D	Tail swing radius	3460	
D'	Rear-end length	3400	
E	Overall width of upper structure	2980	
F	Overall height of cab	3090	
G	Min. ground clearance	500	
H	Track gauge	2680	
I	Overall length	2.65 m ARM	11200
J	Overall height of boom	3420	
K	Track shoe width	600	
L	Overall width	3280	

Working Ranges

(mm)

Boom length (std.)	6450
Arm length (std.)	2200 *2650

A	Maximum Digging Reach.	10210	10710
A'	Digging Reach on Ground.	10010	10580
B	Max Digging Depth	6305	6820
B'	Max- Digging Depth (8' level).	6110	6650
C	Vertical Digging Depth	5110	6320
D	Maximum Digging Height	9830	10190
E	Maximum Dumping Height.	6840	7120
F	Minimum Swing Radius.	4840	4620



Bucket Digging Force	23000kgf
Arm Crowd Force	16600kgf

LIFTING CAPACITIES

LIFTING CAPACITIES R340L SMART



Rating over-front



Rating over-side

6.45 m (21 '2") boom, 2.65 m (8'8") arm equipped with 2.1m³ SAE heaped bucket and 600 mm (24") triple grouser shoe														
Load point height m (ft)		Load radius										At max. reach		
		3.0 m (10.0 ft)		4.5 m (15.0 ft)		6.0 m (20.0 ft)		7.5 m (25.0 ft)		9.0 m (30.0ft)		Capacity		Reach
														m (ft)
7.5m (25.0ft)	kg lb											*5660 *12480	4350 9590	8.53 (28.0)
6.0m (20.0ft)	kg lb							*6280 *13850	*5490 *12100			*5690 *12540	3480 7670	9.35 (30.7)
4.5m (15.0ft)	kg lb			*10130 *22330	*10130 *22330	*7920 *17460	7860 17330	*6830 *15060	*5250 *11570			*5050 *11130	3010 6640	9.84 (32.3)
3.0m (10.0ft)	kg lb			*13280 *29280	11390 25110	*9400 *20720	7230 15940	*7600 *16760	*4950 *10910	5800 12790	3480 7670	*4740 *10450	2780 6130	10.05 (33.0)
1.5 m (5.0ft)	kg lb			*15570 *34330	10410 22950	*10730 *23660	6700 14770	7730 17040	4660 10270	5650 12460	3340 7360	*4700 *10360	2730 6020	10.01 (32.8)
Ground Line	kg lb			*16360 *36070	10050 22160	10850 23920	6370 14040	7510 16560	4450 16560			4930 10870	2870 6330	9.70 (31.8)
-1.5m (-5.0ft)	kg lb	*15210 *33530	*15210 *33530	*16110 *35520	10030 22110	10720 23630	6260 13800	7420 16360	4370 9630			5520 12170	3250 7170	9.10 (29.9)
-3.0m (-10.0ft)	kg lb	*21030 *46360	*21030 *46360	*14990 *33050	10210 22510	10810 23830	6330 13960	7510 16560	4460 9830			*6780 *14950	4080 8990	8.12 (26.6)
-4.5m (-15.0ft)	kg lb	*17350 *38250	*17350 *38250	*12640 *27870	10620 23410	*9240 *20370	6630 14620					*6280 *13850	6120 13490	6.58 (21.6)

- Lifting capacity is based on SAE J1097, ISO 10567.
- Lifting capacity of the Robex Series does not exceed 75% of the tipping load with the machine on firm, level ground or 87% of full hydraulic capacity.
- The load point is a hook (standard equipment) located on the back of the bucket.
- (*) indicates the load limited by hydraulic capacity.

SPECIFICATIONS

BUCKETS

All buckets are welded with high-strength steel.

GENERAL PURPOSE	HEAVY DUTY	MARBLE/ROCK
		
SAE heaped 2.10 m ³ (2.45 yd ³)	SAE heaped 1.62 m ³ (2.12 yd ³)	SAE heaped 1.44 m ³ (1.88 yd ³)

Capacity m ³ (yd ³)		Width mm (in)		Weight. kg (lb)	Recommendation mm (ft-in)
SAE heaped	CECE heaped	Without side cutters	With side cutters		6.45m (21' 2") Boom
* 2.10m ³ (2.75yd ³)	1.90m ³ (2.49yd ³)	1645 mm (64.8")	1670mm (62.7")	1505 (3318)	■
■ 1.62m ³ (2.12yd ³)HD	1.43m ³ (1.87yd ³)	1420 mm (55.9")	-	1541 (3397)	■
● 1.44m ³ (1.88yd ³)HD	1.25m ³ (1.64yd ³)	1180 mm (46.5")	-	1445 (3186)	●

* : Standard backhoe bucket
 ■ : Heavy Duty bucket
 ● : Rock Heavy Duty Bucket

● Applicable for materials with density of 2,000 kg/m³ (3,370lb yd³) or less
 ■ Applicable for materials with density of 1,600 kg/m³ (2,700 lb/yd³) or less

ATTACHMENT

Boom and arm are of all-welded with a low-stress, full-box section design 6450mm (21'2") boom and 2650mm (8'8") Arm is available.

Buckets are all-welded, high-strength steel implements.

DIGGING FORCE

Arm	Length	mm (ft.in)	*2650 [8' 8"]
	Weight	kg (lb)	1625 [3583]
Bucket digging force	SAE	kN	199.1 [217.2]
		kgf	20300 [22150]
		lbf	44750 [48820]
	ISO	kN	225.6 [246.1]
		kgf	23000 [25050]
		lbf	50710 [55320]
Arm crowd force	SAE	kN	156.9 [171.2]
		kgf	16000 [17480]
		lbf	35270 [38480]
	ISO	kN	162.8 [177.6]
		kgf	16600 [18080]
		lbf	36600 [39930]

*: Standard Arm weight including cylinder and linkage

STANDARD / OPTIONAL LIST

Standard Equipment

ISO standard cabin
 All-weather steel cab with all-around visibility
 Safety glass windows
 Sliding fold-in front window
 Sliding side window
 Rise-up type windshield wiper
 Air-conditioner (5000kcal/hr, 20000 BTU/hr)
 Accessory box & Ashtray

Computer Aided Power Optimization (New CAPO) system

2-power mode, 3-work mode, 2-user mode
 Auto deceleration & one touch deceleration system
 Auto engine overheat prevention system
 Self diagnostic system
 Centralized monitoring
 LCD display
 Engine speed
 Clock & Error code
 Fuel level gauge
 Engine coolant temperature gauge
 Hyd. oil temperature gauge

Warning

Fuel level
 Check CPU
 Engine oil pressure
 Engine coolant temperature
 Hyd. oil temperature
 Low battery
 Air cleaner clogging
 Door and cab locks, one key
 One outside rearview mirror
 Fully adjustable suspension seat
 Slidable joystick, pilot-operated
 Two front working lights and two cabin work lights
 Electric horn
 Batteries (2 x 12V x 160 AH)
 Battery master switch
 Removable clean out screen for oil cooler
 Automatic swing brake
 Removable reservoir tank
 Fuel pre-filter
 Boom holding system

Arm holding system
 Counter weight (6600kg)
 Radio / USB player
 Water separator & fuel pre filter
 Mono boom (6.45m, 21' 2")
 Arm (2.65m, 8' 8")
 Standard bucket (2.10GP m³, 2.75 yd³)
 Track shoes (600mm, 24")
 Track rail guard
 Cabin front protector
 Operator kit
 Tool kit
 Remote management system (Hi-Track)

Optional Equipment

Beacon lamp
 Single acting piping kit
 Sun visor for cabin inside

Various optional Buckets (SAE heaped)

Rock bucket (1.44 m³, 1.88 yd³)
 Heavy duty bucket (1.62 m³, 2.12 yd³)
 Fuel filler pump



HD Hyundai Construction Equipment India Pvt. Ltd.

Factory Location

Plot No. A-2, M.I.D.C. Chakan, Phase II,
 Village: Khalumbre, Taluka: Khed, Dist: Pune-410501
 E mail: hyundai.care@theconnectionsindia.com
 Toll Free No.: 1800 209 8600

Please Contact

Scan the QR code
 with your phone
 camera & visit
 our website



Oct 2023